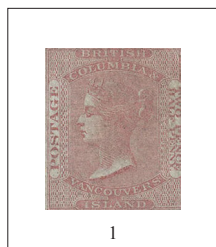
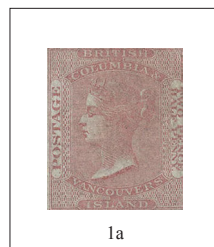


# BRITISH COLUMBIA and VANCOUVER ISLAND 1860 QUEEN VICTORIA PENCE Issue

engraved; no watermark; perf 14 x 14  
De La Rue & Co., London



1  
2½d dull rose



1a  
2½d pale dull rose

# 1865 QUEEN VICTORIA CENTS Issue

engraved; Crown over CC watermark; perf 14 x 14  
De La Rue & Co., London



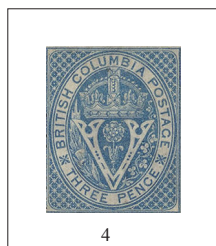
2a  
5¢ rose



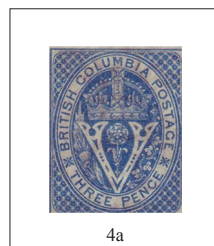
3a  
10¢ blue

# 1865 CENTS Issue

engraved; Crown over CC watermark; perf 14 x 14  
De La Rue & Co., London



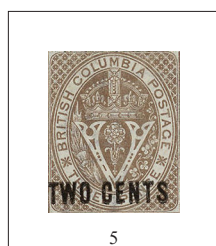
4  
3d blue



4a  
3d deep blue  
1867

# 1868-1871 PROVISIONALS

engraved; Crown over CC watermark; perf 14 x 14  
De La Rue & Co., London



5  
black on brown  
TWO CENTS  
1868



6  
black on bright red  
5. CENTS. 5  
1869



8  
violet on orange  
25. CENTS. 25  
1869

# NEW BRUNSWICK

## 1851 PENCE Issue

engraved; no watermark; imperforate  
Perkins Bacon & Petch, London  
Heraldic Flowers



1

3d red



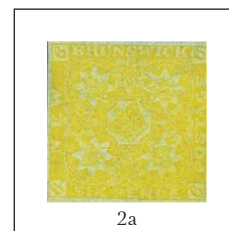
1a

3d dark red



2

6d olive yellow



2a

6d orange yellow

## 1860 CENTS Issue

engraved; no watermark; perf 12 x 12  
American Bank Note Co., New York



4

1c brown violet  
Locomotive



4a

1c red lilac  
Locomotive



8

12½c blue  
Steamship



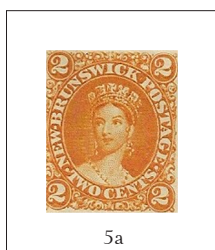
7

10c vermilion  
Queen Victoria



5

2c orange



5a

2c deep orange



5b

2c orange yellow



9

17c black  
Prince of Wales



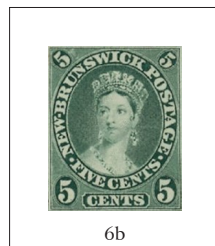
6

5c olive green



6a

5c yellow green



6b

5c blue green



6c

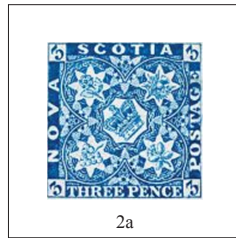
5c blue green  
elongated earring

# NOVA SCOTIA 1851 PENCE Issue

engraved; no watermark; imperforate  
Perkins Bacon & Petch, London  
Heraldic Flowers



2  
3d dark blue



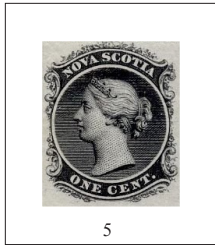
2a  
3d bright blue  
1857



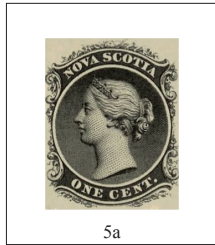
2b  
3d pale blue  
1857

# 1860-63 CENTS Issue

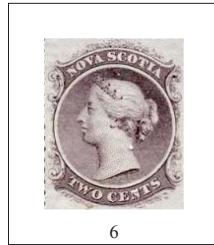
engraved; no watermark; perf 12 x 12  
American Bank Note Co., New York  
Queen Victoria



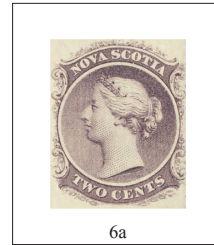
5  
1¢ black



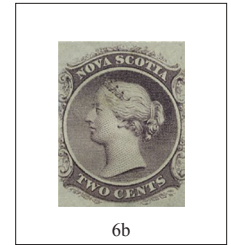
5a  
1¢ black  
yellowish paper



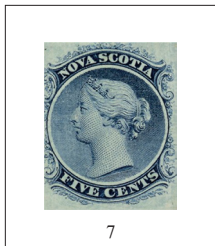
6  
2c lilac



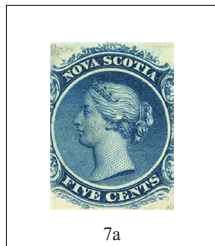
6a  
2c lilac  
yellowish paper



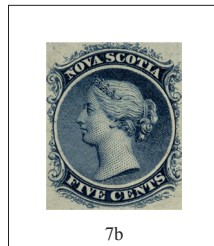
6b  
2c gray purple



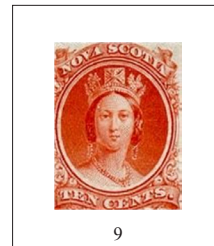
7  
5¢ blue



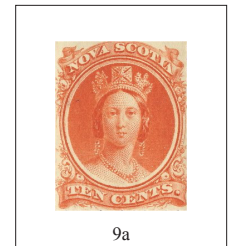
7a  
5¢ blue  
yellowish paper



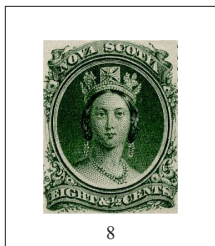
7b  
5¢ dark blue



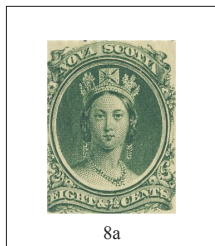
9  
10¢ vermilion



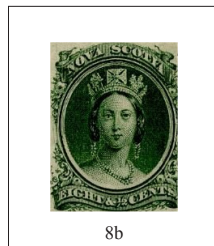
9a  
10¢ vermilion  
yellowish paper



8  
8½¢ green



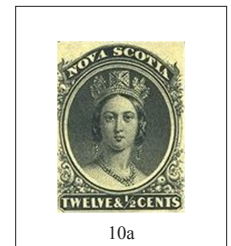
8a  
8½¢ green  
yellowish paper



8b  
8½¢ yellow green



10  
12½¢ black



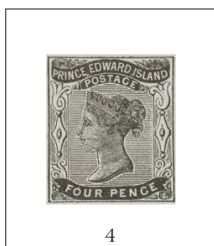
10a  
12½¢ black  
yellowish paper

# PRINCE EDWARD ISLAND

## 1861 - 1870 PENCE Issue

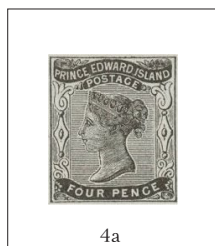
engraved; no watermark; perf 9 x 9

Charles Whiting, London



4

4d black  
12 x 12



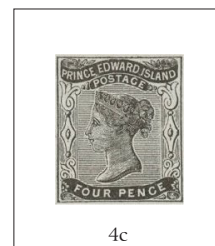
4a

4d black  
yellowish paper



4b

4d black  
FOUP for FOUR



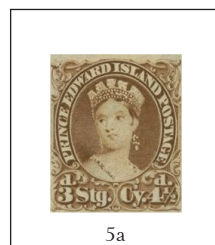
4c

4d black  
11 x 11.75  
1864



5

4½d brown  
12 x 12



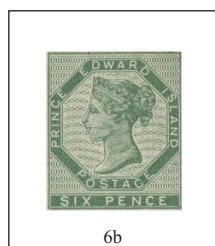
5a

4½d yellow brown



6a

6d green  
11 x 11



6b

6d blue green  
11 x 11



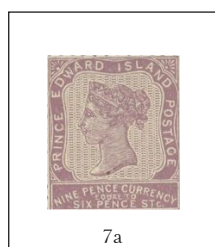
6c

6d green  
11 x 11.75  
1863



7

9d violet  
11 x 11



7a

9d blue violet



7b

9d red violet



7c

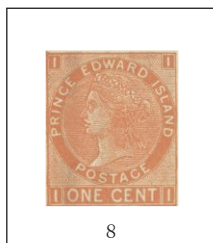
9d violet  
11 x 11.75  
1866

# PRINCE EDWARD ISLAND

## 1872 CENTS Issue

engraved; no watermark; various perms

Charles Whiting, London



8

1¢ brown orange  
11.75 x 11.75



8a

1¢ yellow orange  
11.75 x 11.75



8b

1¢ yellow orange  
12.5 x 12.5



8c

1¢ yellow orange  
11.75 x 12.5



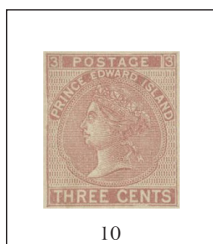
9

2¢ ultramarine  
12.25 x 12.5



9a

2¢ ultramarine  
11.75 x 12.25



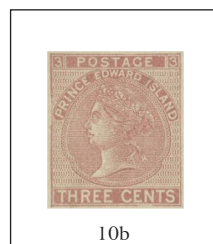
10

3¢ rose  
11.75 x 11.75



10a

3¢ rose  
period between  
PRINCE • EDWARD



10b

3¢ rose  
12.5 x 12.5



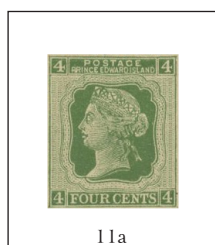
10c

3¢ rose  
11.75 x 12.5



11

4¢ green  
12.25 x 12.25



11a

4¢ yellow green  
12.25 x 12.25



12

6¢ black  
12.25 x 12.25



13

12¢ violet  
12.25 x 12.25